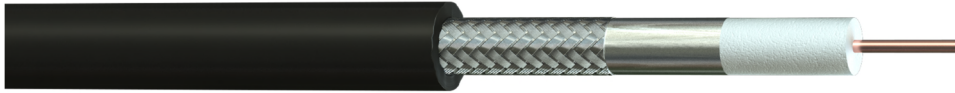


Part No: 390L40
Description: ANT-400 50 Ohm Antennax™ Feeder Cable Black PE Sheath



Construction

Conductor Material : Copper Clad Aluminium
 Stranding : 1/2.74mm
 Dielectric : Foamed Polyethylene (FPE)
 Diameter of Dielectric : 7.24mm
 Screen Material (1) : Bonded Aluminium/Polyester/
 Aluminium Tape
 Coverage (1) : 100%
 Screen Material (2) : Tinned Copper Wire Braid
 Coverage (2) : 86%
 Outer Sheath Material : Polyethylene, UV Resistant
 Outer Sheath Colour : Black

Electrical Characteristics

Impedance : 50 Ω
 Velocity of Propagation : 85%
 Withstand Voltage : 2.5 kV
 Jacket Spark : 8.0 kVrms
 Capacitance : 24 pF/ft (78.7 pF/m)
 Conductor Resistance : ≤ 4.6 Ω/km
 Outer Conductor Resistance : ≤ 5.4 Ω/km
 Return Loss (30-2800MHz) : ≥ 15 dB
 Peak Power : 16.0 kW

Physical Characteristics

Overall Diameter : 10.3mm
 Min. Bend Radius : 24.5mm
 Temperature Rating : -30°C to +85°C
 Weight : 100 kg/km

Standards

RoHS2 Compliant : Yes

Connectors

390L40-EZCB1	BNC Male Connector (Spring Finger) for Antennax ANT-400
390L40-EZCN1	N-Type Male Connector (Spring Finger) for Antennax ANT-400
390L40-EZCN2	N-Type Female Connector (Spring Finger) for Antennax ANT-400
390L40-EZCT1	TNC Male Connector (Spring Finger) for Antennax ANT-400
390L40-EZCT2	TNC Female Connector (Spring Finger) for Antennax ANT-400
390L40-EZCT6	TNC Reverse Polarity Male Connector (Spring Finger) for Antennax ANT-400
390L40-EZCT7	TNC Reverse Polarity Female Connector (Spring Finger) for Antennax ANT-400

Tools

390L40-T1	Crimp Tool for Antennax ANT-400
390L40-EZS1	EZ Strip and Prep Tool for Antennax ANT-400

Attenuation

Frequency (MHz)	Attenuation	
	dB/100ft	dB/100m
30	0.8	2.5
50	1.0	3.2
150	1.5	4.9
220	1.9	6.2
450	2.7	8.8
900	3.9	12.8
1500	5.1	16.7
1800	5.6	18.3
2000	5.9	19.3
2500	6.7	21.9
5800	11.2	36.5

These are actual test results from production cable. They should not be confused with the theoretical data shown in some companies catalogues.

Attenuation performance independently verified by Telegärtner UK Ltd

